

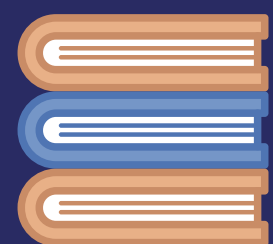


# STEP 1

## 8<sup>th</sup> March

### Education

- Schools and colleges can open for all students
- Practical Higher Education courses



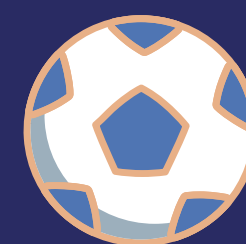
### Social Contact

- Exercise and recreation outdoors with household or one other person
- Household only indoors



### Business & Activities

- Wraparound care, including sport, for all children



### Travel

- Stay at home
- No holidays



### Events

- Funerals (30)
- Weddings and wakes (6)



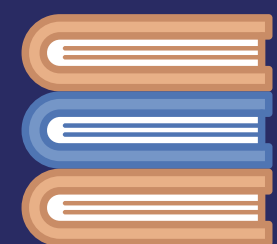


# STEP 1

## 29<sup>th</sup> March

### Education

- As previous step



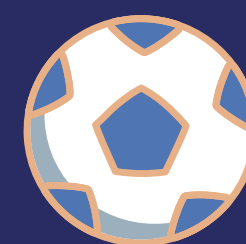
### Social Contact

- Rule of 6 or two households outdoors
- Household only indoors



### Business & Activities

- Organised outdoor sport (children and adults)
- Outdoor sport and leisure facilities
- All outdoor children's activities
- Outdoor parent & child group (up to 15 parents)



### Travel

- Minimise travel
- No holidays



### Events

- Funerals (30)
- Weddings and wakes (6)



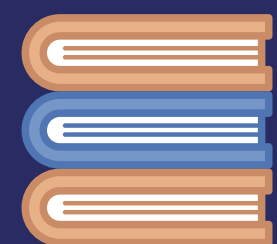


# STEP 2

## No earlier than April 12<sup>th</sup>

### Education

- As previous step



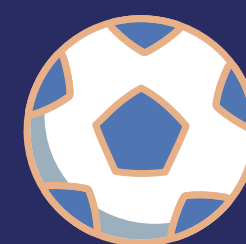
### Social Contact

- Rule of 6 or two households outdoors
- Household only indoors



### Business & Activities

- All retail
- Personal care
- Libraries & community centres
- Most outdoor attractions
- Indoor leisure inc. gyms (individual use only)
- Self-contained accommodation
- All children's activities
- Outdoor hospitality
- Indoor parent & child groups (up to 15 parents)



### Travel

- Domestic overnight stays
- No international holidays



### Events

- Funerals (30)
- Weddings, wakes, receptions (15)
- Event pilots



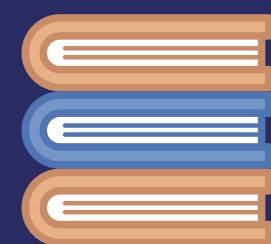


# STEP 3

No earlier than May 17<sup>th</sup>

## Education

- As previous step



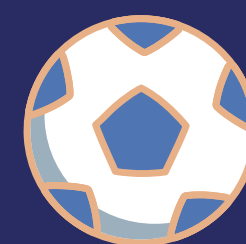
## Social Contact

- Maximum 30 people outdoors
- Rule of 6 or two households indoors (subject to review)



## Business & Activities

- Indoor hospitality
- Indoor entertainment and attractions
- Organised indoor sport (adult)
- Remaining accommodation
- Remaining outdoor entertainment (including performances)



## Travel

- Domestic overnight stays
- International travel (subject to review)



## Events

- Most significant life events (30)
- Indoor events: 1,000 or 50%
- Outdoor seated events: 10,000 or 25%



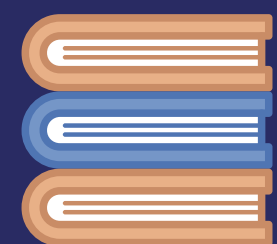


# STEP 4

No earlier than June 21<sup>st</sup>

## Education

- As previous step



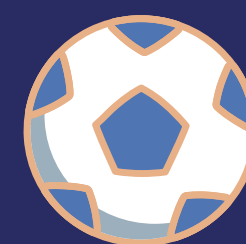
## Social Contact

- No legal limit



## Business & Activities

- Remaining businesses, including nightclubs



## Travel

- Domestic overnight stays
- International travel



## Events

- No legal limit on life events
- Larger events

